

TABLE OF CONTENTS

General Safety Rules.....	1
Specific Safety Rules.....	4
Symbols.....	7
Product Specifications.....	8
Features.....	8
Operating Instructions.....	9
Maintenance.....	13
Part List.....	15
Accessories.....	16
Customer Service.....	16

GENERAL SAFETY RULES



WARNING! Read and understand all instructions. Failure to follow all instructions listed below may result in electric shock, fire and/or serious personal injury.

SAVE THESE INSTRUCTIONS.

WORK AREA SAFETY

- Always keep your work area clean and well lit. Cluttered benches and dark areas invite accidents.
- Do not operate power tools in explosive atmospheres, such as in the presence of flammable liquids, gases, or dust. Power tools create sparks which may ignite the dust or fumes.
- Keep by-standers, children and visitors away while operating a power tool. Distractions can cause you to lose control.

ELECTRICAL SAFETY

- Avoid body contact with grounded surfaces such as pipes, radiators, ranges & refrigerators. There is an increased risk of electric shock if your body is grounded.
- Do not expose power tools to rain or wet conditions. Water entering a power tool will increase the risk of electric shock. If operating the power tool in damp locations is unavoidable, a Ground Fault Circuit Interrupter must be used to supply the power to your tool. Use Electrician's rubber gloves and footwear to further enhance your personal safety in damp conditions.
- Do not abuse the cord. Never use the cord to carry the tool or to pull the plug. Keep cord away from heat, oil, sharp edges or moving parts. Contact Customer Service if cord is damaged and do not use the saw. Damaged cords increase the risk of electric shock.
- When operating a power tool outside, always use an outdoor extension cord with a minimum 13 amperes fuse. These cords are rated for outdoor use and reduce the risk of electric shock. For recommended sizes of extension cords refer to the following table.

Minimum Gauge for Extension Cord (AWG)

Volts	Total Length of Cord			
	0 to 25 ft	26 to 50 ft	51 to 100 ft	101 to 150
120 V	0 to 25 ft	26 to 50 ft	51 to 100 ft	101 to 150
240 V	0 to 50 ft	51 to 100 ft	101 to 200 ft	201 to 300 ft
Ampere Rating	AWG	AWG	AWG	AWG
More than 0 Not more than 6	18	16	16	14
More than 6 Not more than 10	18	16	14	12
More than 10 Not more than 13	16	16	14	12
More than 13 Not more than 16	14	12	Not Recommended	

Note: The extension cord must have adequate wire size AWG (American Wire Gauge) for safe, efficient use. Smaller gauge wires have greater capacity (16 gauge wire has more capacity than 18 gauge wire)

PERSONAL SAFETY

- Stay alert, watch what you are doing and use common sense when operating power tool. Do not use tool while tired or under the influence of drugs, alcohol or medication. A moment of inattention while operating power tools may result in serious personal injury.
- Dress properly. Do not wear loose clothing or jewelry. Contain long hair. Keep your hair, clothing and gloves away from moving parts. Loose clothes, jewelry or long hair can be caught in moving parts. Keep handles dry, clean and free from oil & grease. Rubber gloves and non-skid footwear are recommended when working outdoors. Wear protective hair covering to contain long hair.
- Avoid accidental starting. Carrying tools with your finger on the switch or plugging in tools that have the switch "ON" position invites accidents.
- Remove adjusting keys or wrenches before switching the tool "ON". A wrench or a key that is left attached to a rotating part of the tool may result in personal injury.
- Do not overreach. Keep proper footing and balance at all times. Proper footing and balance enables better control of the tool in unexpected situations.
- Use safety equipment. Always wear eye protection. Dust mask, non-skid safety shoes, hardhat, or hearing protection must be used for appropriate conditions.

TOOL USE AND CARE

- Always use clamps or other practical ways to secure and support the work piece to a stable platform. Holding the material in your hand or against your body is dangerous and may lead to loss of control. Hold the tool firmly to prevent loss of control.
- Do not force tool. Use the correct tool for your application. The correct tool will do the job better and safer at the rate for which it is designed.
- Do not use tool if switch does not turn it "ON" or "OFF". Any tool that cannot be controlled with the switch is dangerous and must be repaired.
- Disconnect the plug from the power source before making any inspections, adjustments, changing accessories, or storing the tool. Such preventative safety measures reduce the risk of starting the tool accidentally.

- Store idle tools in a dry place & locked up, out of reach of children and other untrained persons. Tools are dangerous in the hands of untrained users.
- Maintain tools with care. Keep cutting tools sharp and clean. Properly maintained tools, with sharp cutting edges are less likely to jam and are easier to control. Any alteration or modification is a misuse and may result in a dangerous condition.
- Check for misalignment or binding of moving parts, breakage of parts and any other condition that may affect the tools operation. If damaged, contact Customer Service before using. Many accidents are caused by poorly maintained tools. Develop a periodic maintenance schedule for your tool. Contact Customer Service to have defective switches replaced. Keep handles dry, clean, and free from oil and grease.
- Use only accessories that are recommended by the manufacturer for your model. Accessories that may be suitable for one tool may become hazardous when used on another tool.
- While operating, always keep the cord away from the cutting area.

SERVICE

- Tool service must be performed only by qualified repair personnel. Service or maintenance performed by unqualified personnel could result in a risk of injury. Contact Customer Service for information for repairs.
- When servicing a tool, always use only identical replacement parts. Follow instructions in the maintenance section of this manual. Use of unauthorized parts or failure to follow maintenance instructions may create a risk of electric shock or injury. Certain cleaning agents such as gasoline, carbon tetrachloride, ammonia, etc. may damage plastic parts.

PLEASE NOTE! DO NOT TOUCH ANY MOVING PARTS WHEN THE MACHINE IS RUNNING.

SPECIFIC SAFETY RULES

DANGER! KEEP HANDS AWAY FROM CUTTING AREA AND BLADE.

- Always keep one hand on the auxiliary handle and the other on the motor housing. With both hands holding the saw (machine), they cannot be cut by the blades. Keep your body positioned to either side of the saw blade, but not in line with the saw blade. Hold the saw firmly to prevent loss of control. Do not reach underneath the material being cut. The guard cannot protect you from the blade below the material. Do not attempt to remove cut material when blade is moving. Always check that lower guard properly closes before each use. Do not operate saw if lower guard does not move freely and close instantly. Never clamp or tie the lower guard into the open position. If saw is accidentally dropped, lower guard may be bent. Raise the lower guard with the retracting handle and make sure it moves freely and does not touch the blade

or any other part. In all angles and depths of cut check the operation and condition of the lower guard spring. If the guard and the spring are not operating properly, they must be serviced before use. Lower guard may operate sluggishly due to damaged parts, gummy deposits, or a buildup of debris. Disconnect the plug from power source. Periodically remove the blade, clean the upper and lower guards and the hub area with a degreaser and wipe it dry, or blow it clean with compressed air.

- The lower guard should be retracted manually only for making special cuts such as “Pocket cuts” and “Compound Cuts”. Always raise lower guard by lower guard handle ever. As soon as blade enters the material, the lower guard must be released for all other sawing, the lower guard should operate automatically.
- Always observe that the lower guard is covering the blade before placing saw down on a bench or floor. An unprotected, moving blade will cause the saw to jump, cutting whatever is in its path. Be aware of the time it takes for the blade to stop after switch is released.
- NEVER hold piece being cut in your hands or across your leg. It is important to support the material properly to minimize body exposure, blade jamming, or loss of control.
- Always hold tool by the insulated gripping surfaces when performing an operation where the cutting tool may contact hidden wiring or its own cord. Contact with a “live” wire will also make exposed metal parts of the tool “live” and shock the operator.
- DO NOT use any other blades than the DUALSAW Blades specially designed for this tool. Other blades do not match the mounting hardware & will cause loss of control.
- Never use damaged or incorrect flanges (drivers) or bolts. The flanges (drivers) & bolts are specially designed for your saw for optimum performance and safety of operation.
- DO NOT turn the saw on while carrying it. Lower guard may be opened by contact with your clothing. Accidental contact with the spinning saw blade could result in serious personal injury.
- **Never attempt to operate saw with only one blade.** Kickback will occur and send the saw towards you resulting in serious injury.

CAUSES AND OPERATOR PREVENTION FROM KICKBACK

Kickback is a sudden reaction to a pinched, bound or misaligned saw blade, causing an uncontrolled saw to lift up and out of the work piece and toward operator.

When the blade is pinched or bound tightly by the kerf closing down, the blade stalls and the motor reaction drives the unit rapidly back toward the operator.

If the blade becomes twisted or misaligned in the cut, the teeth at the back edge of the blade can dig into the top surface of the work piece causing the blade to climb out of the kerf and jump back toward the operator.

Kickback is the result of tool misuse and/or incorrect operating procedures or conditions and can be avoided by taking proper precautions as given below:

- **Maintain a firm grip with both hands on the saw and position your body and arm to allow you to resist kickback forces.** Kickback

forces can be controlled by the operator, if proper precautions are taken.

- **Support large panels to minimize the risk of blade pinching and kickback.** Large panels tend to sag under their own weight. Supports must be placed under the panel on both sides, near the line of cut and near the edge of the panel.
- **Do not use dull or damaged blades.** Unsharpened or improperly set blades produce narrow kerf causing excessive friction, blade binding and kickback.
- **Use extra caution when making a “Pocket Cut” into existing walls or other blind areas.** The protruding blade may cut objects that can cause kickback.
- **Depending upon use, the switch may not last the life of the saw.** If the switch should fail in the “OFF” position, the saw may not start. If it should fail while the saw is running, the saw may not shut off. If either occurs, unplug the saw immediately and do not use until repaired. Contact Customer Service.
- **Guard against kickback** if the saw stalls and is rapidly driven back towards the operator, release switch immediately if blade binds or saw stalls. Do not force tool. Stay alert, exercise control.



WARNING!

- DO NOT let familiarity with your saw make you careless. Remember that a careless fraction of a second is sufficient to cause severe injury.
- This saw uses specially designed blades and no other types of blades should ever be used. Other types of blades will not operate safely in this saw & could result in serious personal injury.
- If the blades come in contact with the work piece before they reach full speed, it could cause the saw to kickback towards you resulting in serious injury.
- Always make sure both blades enter into the material at the same time. Entering with only one blade will cause unexpected kickback, risking serious injury. Therefore, in the case of cutting at an angle, do not approach from the side with only one blade touching, but from the top with both blades entering simultaneously.
- The side of the blades cannot be used for cutting. Therefore, in horizontal cuts, make sure saw is not resting on lower blade. Wedge the work piece to prevent unexpected kickback


ADDITIONAL SAFETY RULES



- Be sure to read and understand all instructions. Failure to follow all instructions listed below may result in electric shock, fire and/or serious personal injury.
- Know your power tool. Read operator’s manual carefully. Learn the applications and limitations, as well as the specific potential hazards related to this tool. Following this rule will reduce the risk of electric shock, fire or serious injury.

- Always wear safety glasses or eye shields when using this saw. Everyday eyeglasses have only impact-resistant lenses; they are NOT safety glasses. Following this rule will reduce the risk of serious personal injury.
- Always protect your lungs. Wear a facemask or dust mask if the operation is dusty. Following this rule will reduce the risk of serious personal injury.
- Always protect your hearing. Wear protection during extended periods of operation. Following this rule will reduce the risk of serious personal injury.
- Inspect the tool's cord periodically and if damaged contact Customer Service. ALWAYS be aware of the cord location. Following this rule will reduce the risk of electric shock or fire.
- Check for damaged parts. Before using the tool, inspect all parts for damage to determine if it would operate properly and perform its intended function. Check for misalignment or binding of moving parts, breakage of parts and any other condition that may affect the tool's operation. A guard or other part that is damaged should be properly repaired or replaced. Contact Customer Service. Following this rule will reduce the risk of electric
- shock, fire or serious injury.

SYMBOLS

IMPORTANT: Some of the following symbols may be used on your tool. Please study them and learn their meaning. Proper interpretation of these symbols will allow you to operate the tool better and safer.

Symbol	Name	Designation
V	Volts	Voltage (potential)
A	Amperes	Current
Hz	Hertz	Frequency (cycles per
W	Watt	Power
Kg	Kilograms	Weight
Min	Minutes	Time
s	Seconds	Time
∅	Diameter	Size of drill bits, grinding wheels, Saw blades etc.
N0	No load Speed	Rotational speed, at no load...
.../min	Per Minute	Revolutions, strokes, surface speed, orbits etc. per minute
	Arrow	Action in the direction of arrow

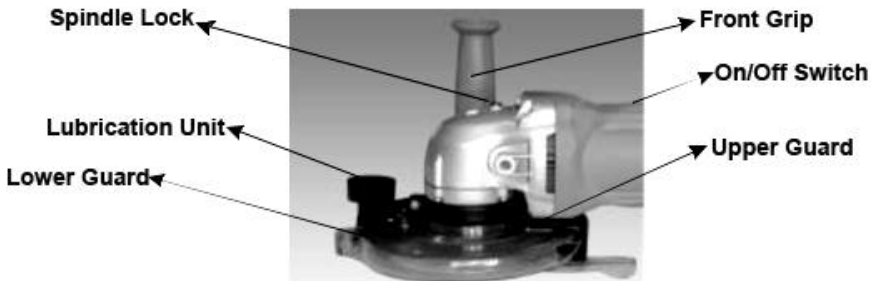
	Class II Construction	Designates Double Insulated Construction tools
	Warning symbol	Alerts user to warning messages



PRODUCT SPECIFICATIONS

Power	7.5 A
Current (no load)	4.2 A
Frequency	60 Hz
Blade Size	4.5 In.
No Load Speed	5500 RPM
Depth of Cut (Max)	1 In.


FEATURES



- The DUALSAW has two specially designed blades spinning in opposite directions, providing smoother finished cuts with less vibration and kickback than any single blade saw!
- Patented Counter Facing Teeth on each blade: one side cuts while the other one smoothes, giving a perfectly finished cut without splintering or breaking.
- Patented Blade Venting technology eliminates friction between blades, increasing performance and making the DUALSAW the ultimate cutting machine.
- Patented QUADForce™ Blade System allows you to reverse and reuse one blade, increasing blade life and cutting capacity by 50%.
- Specially designed metallic protection guard with integrated lubrication system and vacuum attachment.

Your DUALSAW has many built-in convenience features for fast, efficient cutting. These features include an innovative QUADForce™ Blade System where the blades spin in opposite directions to provide smooth, clean cuts with less vibration and kickback. It also includes a pre-installed blade lubricating system for cutting aluminum, copper, stainless steel and cast iron.

For your convenience, there is no special assembly required for your DUALSAW except assist handle.

 **WARNING:** This DUALSAW uses specially designed blades and no other types of blades should ever be used. Other blades will not operate safely in this saw and could result in serious personal injury.


OPERATING INSTRUCTIONS

SAW BLADES


- Even the best saw blades would not cut efficiently if they are not kept clean, sharp & properly set. Using a dull blade will place a heavy load on your saw and increases the danger of kickback. Keep extra blades on hand, so sharp blades are always available.
- Gum and wood pitch hardened on your blade will slow your saw down. Use gum and pitch remover, hot water or degreaser to remove these accumulations. DO NOT use gasoline.
- When it becomes necessary to replace the blades, see the Assembly on page 19 of this manual for the proper blades to use with this DUALSAW and Removing and Replacing the Blades on Page 16 of this manual for the proper blade changing procedures.


BLADE GUARD SYSTEM

- The lower blade guard, attached to your saw, is there for your protection and safety. It should NEVER be altered for any reason. If it becomes damaged or begins to return slowly or sluggishly, DO NOT use your saw until the damage has been repaired or replaced. Contact Customer Service. ALWAYS leave the guard in its correct operating position when using the saw.
- CAUTION: NEVER use the saw when the guard is not operating properly. The guard should be checked for correct operation before each use. If you drop your saw, check the lower blade guard and bumper for damage at all depth settings before using.
- NOTE: The guard is operating properly when it moves freely and then readily returns to the closed position. If, for any reason, your lower blade guard does not close freely, contact Customer Service for assistance before using it.


 **WARNING:** ALWAYS maintain control of the saw to make sawing safer and easier. Loss of control of the saw could cause an accident resulting in possible serious injury.

STARTING A CUT

 **DANGER:** If the cord hangs up on the work piece during a cut, release the trigger switch immediately. Unplug the saw and move the cord to prevent it from hanging up again.

 **DANGER:** Using the saw with a damaged cord could result in serious injury or death. If the cord has been damaged, have it replaced before using the saw again. Contact Customer Service.

- ALWAYS use your saw correctly.
- ALWAYS support the work piece near the cut.

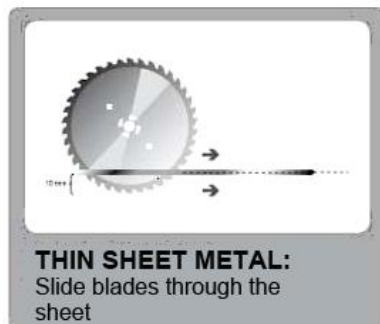
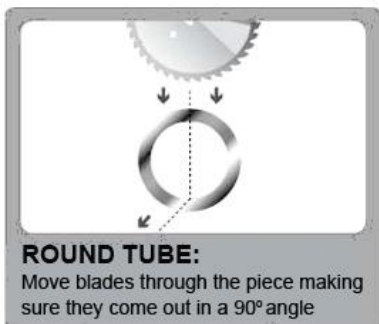
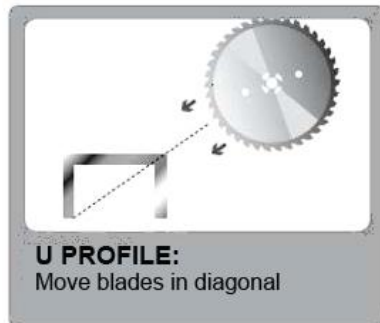
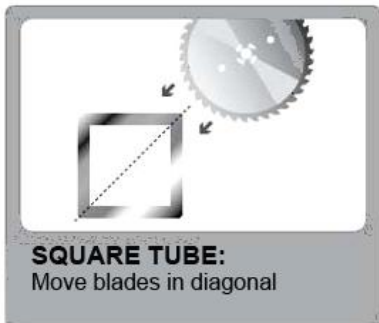
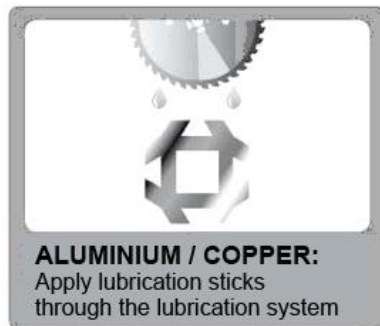
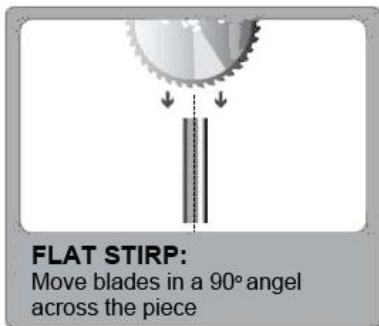
 **WARNING:** If the blades come in contact with the work piece before they reach full speed, it could cause the saw to kickback towards you, resulting in serious injury

- Always support the work piece so the cut will be on your side.
- Always clamp the work piece so it will not move during the cut. Before starting a cut, draw a guideline along the desired line of cut. Then place the front edge of the saw blades on that part of the work piece that is solidly supported.
- Never place the saw on the part of the work piece that will fall off when the cut is made.
- Always keep the cord away from the cutting area. Always place the cord so it does not hang up on the work piece when making a cut.
- Slide the on/off switch to start the saw. Always let the blades reach full speed before you begin to cut into the work piece.
- When making a cut, always use steady, even pressure. Forcing the saw causes rough cuts and could shorten the life of the saw or cause kickback.
- Always use the lubricating device (included) when cutting aluminum, copper, stainless steel & cast iron materials, because they have a tendency to smear and adhere to the blades.
- Always feed material parallel to the blade. Feeding at an angle can burn the blade and damage the blade teeth.

FEED SPEED - SELECTING THE CORRECT FEED IS IMPORTANT

- Feed speed is how quickly you push the saw blades through the material being cut. The correct feed speed is totally determined by the hardness and the thickness of the material being cut.
- With thin materials first feed the blades down with the teeth protruding only 10-12mm, then move forward (or backward) for cutting.
- If the feed speed is too slow the blades will only press down the material rather than cutting it. The blade edges glide and wear down the material.
- This will cause a poor cut and will cause excessive wear on the blades.
- If the feed speed is too fast there is a definite risk that the cut might split. The splinter will get bigger and bigger and eventually break risking serious personal injury.
- If the feed speed is too high there is a risk that the cut might split and the splinter opening's volume will not be sufficient to divert all the shaving. The result is a poor cut with significant discharge on the lower side of the material.
- Feeding must be parallel to the blade. Feeding at an angle can burn the blade and damage the teeth.

INSTRUCTION FOR CUTTING VARIOUS CROSS SECTIONAL MATERIALS



REMOVAL OF USED BLADES

1. Unplug the saw and allow blades to cool
2. Lock one of the driver flange with a help of spindle lock pin on the gear housing. (Fig 2)

3. Unscrew Lock Nut by rotation in counter clock wise direction. (Fig 4)
4. Open the lower guard.
5. Lift up and remove Blade "FACE 1". (Fig 3)
6. Lift up and remove Blade "FACE 2"

FIXING REPLACEMENT SAW BLADES

7. Lay the saw down with the lock nut pointing upwards and open the lower guard. (Fig.1)
8. Place blade "FACE 2" onto the flange with the "FACE 2" clearly visible. 9. Place blade "FACE 1" with the "FACE 1" easily visible. (Fig 4)
10. Then thread lock nut onto shaft.
11. Tighten the lock nut. (Fig 5)
12. Carefully turn blades with your hand to be sure they easily turn in opposite directions.



Fig 1



Fig 2



Fig 3



Fig 4



Fig 5

REVERSING BLADES FOR MORE BLADE LIFE

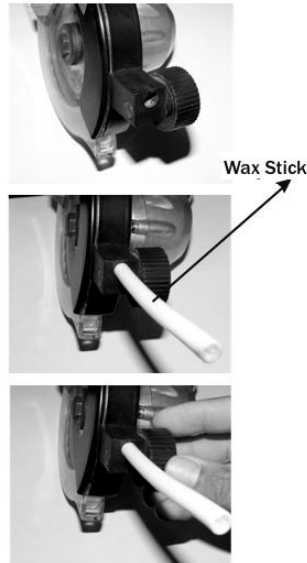
- Follow instructions 1 through 5
- After removing blade "FACE 1" lift up and flip blade "FACE 2"
- Follow instructions 9 to 12

⚠ WARNING: Only blade "FACE 2" can be reverse. Reversing blade "FACE 1" will generate extreme friction and will cause machine failure. **ONLY REVERSE BLADE "FACE 2".**

LUBRICANT INSTRUCTIONS

- The blades are equipped with "Dry Cut" teeth. As a rule these need not be lubricated. However, in extreme cutting conditions, cutting paste can be applied.
- When cutting aluminum, copper, stainless steel and cast iron, the lubricating device must always be used.

- We recommend that you buy cutter paste in rod form, available from your nearest dealer.
- Insert a cutter paste rod.
- **IMPORTANT!** The lubricating paste is added by turning the feeder wheel. Proper dosage is required.



MAINTENANCE

All parts represent an important part of the double insulation system and should be serviced only at our authorized service center. Contact Customer Service. Avoid using solvents when cleaning plastic parts. Most plastics are susceptible to damage from various types of commercial solvents and may be damaged by their use. Use clean clothes to remove dirt, carbon dust etc.

It is a known fact that electric tools are subject to accelerated wear and possible premature failure when they are used to work on fiber glass boats and sports cars, wallboard, spackling compounds or plaster. The chips and grindings from these materials are highly abrasive to electrical tool parts, such as bearings, brushes, commutators, etc. Consequently clean the tool even more intensely after working these materials.

CLEANING AND STORAGE

- Resin and other materials that easily become attached to the sides of the blade often cause the blade to overheat. This means that it can buckle or even split. You must therefore always keep the blade clean. Wash it with a solvent. Never try to scrape the blade clean with a hard object.
- When the blade is not in use, it should be stored in its original sheath, well cleaned and coated with an antitrust agent.

LUBRICATION

All of the bearings in this tool are lubricated with a sufficient amount of high-grade lubricant for the life of the tool under normal operating conditions. Therefore, no further lubrication is required.

DOUBLE INSULATION

Double insulation is a concept in safety in electric power tools, which eliminates the need for the standard 3-wire ground power cord. All exposed metal parts are isolated from the internal motor components with protecting insulation. Double insulated power tools do not need to be grounded.

EXTENSION CORDS

The use of any extension cord will cause some loss of power. To keep the loss at a minimum and to prevent overheating, use an extension cord that is heavy enough to carry the current that the tool will draw. (Refer to Table on Page 2)

TROUBLE SHOOTING

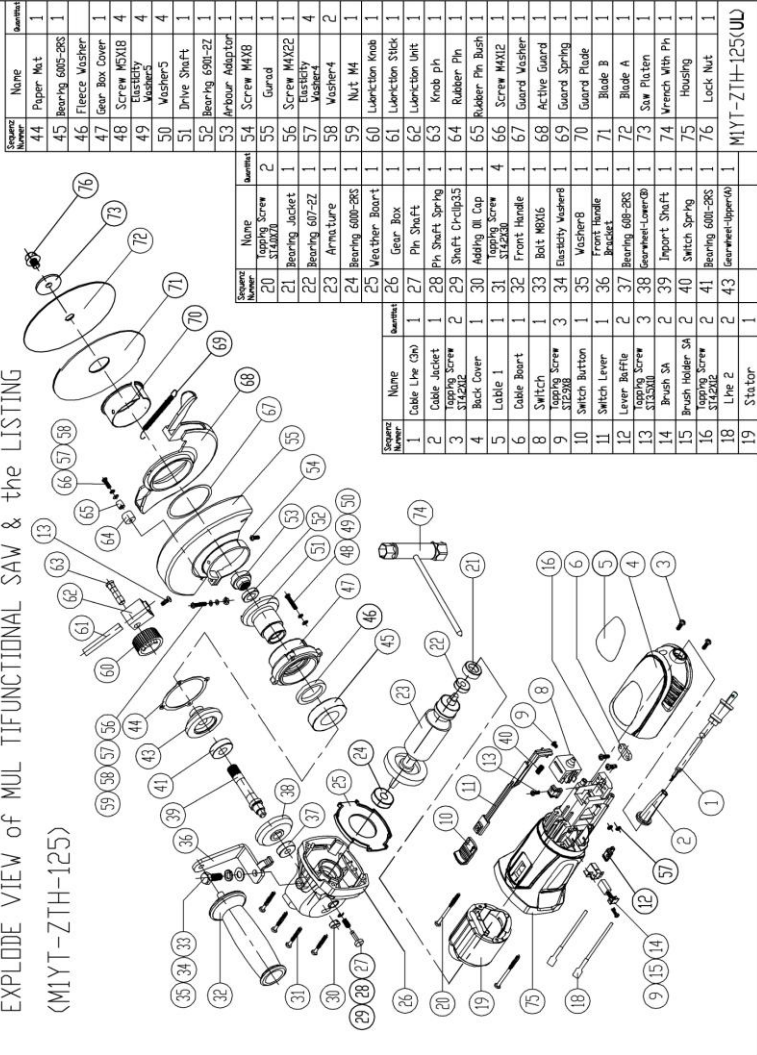
PROBLEM	CAUSE	SOLUTION
An unusually large amount of sparks	<ol style="list-style-type: none">1. Damage Teeth2. Feed speed is too slow3. Blunt Teeth	<ol style="list-style-type: none">1. Replace blades2. Increase feed speed3. Mount new set of blades
A lot of wear in sections	<ol style="list-style-type: none">1. Feed speed is too fast2. Damaged Teeth3. Blunt Teeth4. Not cutting parallel or perpendicular to work surface	<ol style="list-style-type: none">1. Reduce the feed speed2. Replace blades3. Replace blades4. Hold saw parallel to work surface
Blades are breaking	<ol style="list-style-type: none">1. Feed speed is too fast2. Damaged Teeth3. Blunt Teeth4. Blades have burned out	<ol style="list-style-type: none">1. Reduce the feed speed2. Replace blades3. Replace blades4. Replace blades

IMPORTANT!

The servicing of a tool with double insulation requires extreme care and knowledge of the system and should be performed only by a qualified service technician. For service, contact Customer Service for repair. Always use original factory replacement parts when applicable.

PART LIST

EXPLODE VIEW of MUL TIFUNCTIONAL SAW & the LISTING
(MIYT-ZTH-125)



Source Number	Name	Quantity
44	Paper Mat	1
45	Bearing 6002-2RS	1
46	Fleece Washer	1
47	Gear Box Cover	1
48	Screw M5X18	4
49	Elasticity Washer-2	4
50	Washer-3	4
51	Drive Shaft	1
52	Bearing 600-2Z	1
53	Inflator Adaptor	1
54	Screw M4X8	1
55	Guard	2
56	Screw M4X22	1
57	Elasticity Washer-4	4
58	Washer-4	2
59	Nut M4	1
60	Lubrication Hole	1
61	Lubrication Stick	1
62	Lubrication Unit	1
63	Knob pin	1
64	Rubber Pin	1
65	Rubber Pin Bush	1
66	Screw M4X2	1
67	Guard Washer	1
68	Active Guard	1
69	Guard Spring	1
70	Guard Flange	1
71	Blade B	1
72	Blade A	1
73	Blade	1
74	Wrench With Pin	1
75	Housing	1
76	Lock Nut	1
MIYT-ZTH-125(U)		

Source Number	Name	Quantity
20	Lapping Screw ST4202	2
21	Bearing Jacket	1
22	Bearing 607-2Z	1
23	Armature	1
24	Bearing 600-2RS	1
25	Weather Board	1
26	Gear Box	1
27	Pin Shaft	1
28	Pin Shaft Spring	1
29	Shaft Circlip35	1
30	Adding Oil Cap	1
31	Lapping Screw ST4203	4
32	Front Handle	1
33	Bot M8X15	1
34	Elasticity Washer8	1
35	Washer8	1
36	Brook Blade Bracket	1
37	Bearing 600-2RS	1
38	Bearing-Lower8	1
39	Import Shaft	1
40	Switch Spring	1
41	Switch Holder SA ST4212	2
42	Lapping Screw ST4212	2
43	Line 2	2
44	Stator	1

Source Number	Name	Quantity
1	Cable Line Cho	1
2	Cable Jacket	1
3	Lapping Screw ST4202	2
4	Back Cover	1
5	Label 1	1
6	Cable Board	1
8	Switch	1
9	Lapping Screw ST2508	3
10	Switch Button	1
11	Switch Lever	1
12	Lever Buffer	2
13	Lapping Screw ST3200	3
14	Brush SA	2
15	Brush Holder SA	2
16	Lapping Screw ST4212	2
18	Line 2	2
19	Stator	1

ACCESSORIES

The following recommended accessories are available for the DUALSAW CS 450:

- 600 Upgrade Kit: Increases cutting depth 75%
- Ruler Guide: Allows you to make perfectly straight cuts
- Dry Cut Diamond Blades: For stone and masonry
- Universal Tungsten Carbide-Tipped Blades
- Lubrication Sticks
- Cutting Stand: Transforms your DUALSAW into a miter saw



WARNING: Current attachments and accessories available for use with this tool are listed above. Do not use any attachments or accessories not recommended by the manufacturer for this tool. The use of attachments or accessories not recommended can result in serious personal injury.

SERVICE

Now that you have purchased your DUALSAW, should a need ever exist for repair parts or service, simply contact our Customer Service at 1-855-382-5729. Be sure to provide all pertinent facts when you call. You can also check our website www.dualsaw.com for a list of frequently asked questions or e-mail us at custservice@dualsaw.com.

MODEL NO. AND SERIAL NO.

The model and serial number of this saw will be found on the right side of the body of the saw. Please record the model number and serial number in the space provided below.

When calling customer service, always give the following information:

- Model Number: CS 450
- Serial Number: _____

Infusion Brands, Inc.
Clearwater, Florida 33760
Phone: 1-855-382-5729
www.dualsaw.com